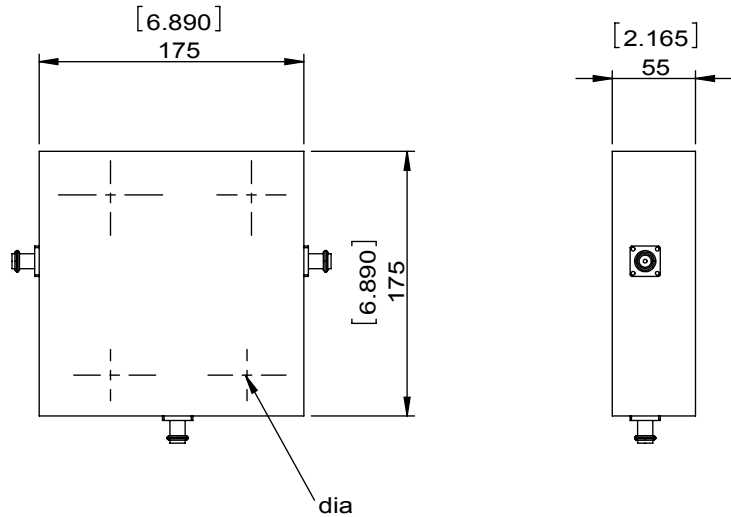



1		2		3		4		5		6	
Document No.	QR4-700-T-003					REV.	DESCRIPTION	REVISOR	DATE	APPROVED	
REV.	A/0					0		JUNMA	05.11.2017	David	

SPECIFICATIONS	
Part's Number	2CCH20-6
Frequency(GHz)	180~220
Direction	CW
Insertion Loss(dB)MAX	0.5
Insertion Loss Ripple	
Isolation(dB)MIN	20
Return Loss(dB)MIN	19.08
3rd IMD(dBc)MAX	
Power FWD/REV/PK(Watt)	300/300/30000
Operating Temperature(°C)	0~+50
Storage Temperature(°C)	
2nd/3rd Harmonic(dBc)	
Termination/Attenuator(Watt/dB)	300
Tab(W×LG×THK)(mm[Inch])	
Additional Notes	GWB





### DORADO Millimeter Wave

<b>MATERIAL:</b>	<b>DWG NO:</b> 2CCH20-6			
<b>SURFACE TREATMENT:</b>	DWG BY:	JUNMA	05.11.2017	SCALE
	CHK'D BY:			
<b>DESCRIPTION:</b> <b>HIGH POWER CIRCULATOR</b>	APPV'D BY:			1:3
	Unit: mm[inch]	Tolerance: Liner: ±0.25 Anguar: ±0.5°	The First:	A4



This document is the property of DORADO Millimeter Wave. It cannot be copied, duplicated, used for manufacturing purposes or communicated to third party as a whole or partly, without the written consent of DORADO Millimeter Wave.