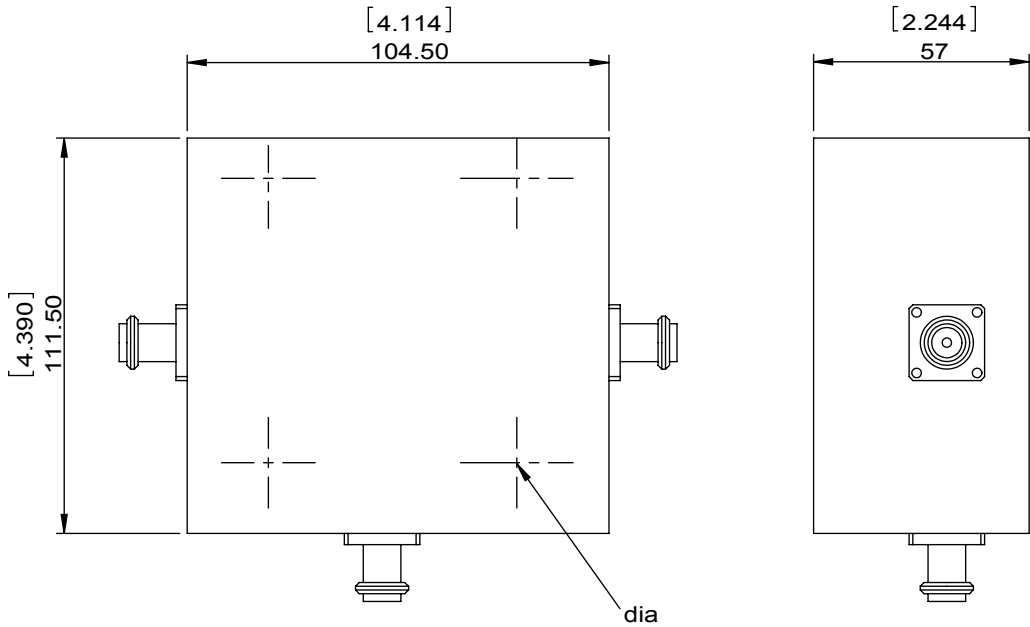


1		2		3		4		5		6	
Document No.	QR4-700-T-003	REV.	A/0	REV.	DESCRIPTION	REVISOR	DATE	APPROVED			
		0				JUNMA	05.11.2017	David			

SPECIFICATIONS	
Part's Number	3CCH30-3
Frequency(GHz)	2000~4000
Direction	CW
Insertion Loss(dB)MAX	0.6
Insertion Loss Ripple	
Isolation(dB)MIN	17
Return Loss(dB)MIN	16.54
3rd IMD(dBc)MAX	
Power FWD/REV/PK(Watt)	2500/2500/2500-
Operating Temperature(°C)	25/-10~+55
Storage Temperature(°C)	
2nd/3rd Harmonic(dBc)	
Termination/Attenuator(Watt/dB)	2500
Tab(W×LG×THK)(mm[Inch])	
Additional Notes	GWB



DORADO Millimeter Wave	
MATERIAL:	DWG NO: 3CCH30-3
SURFACE TREATMENT:	DWG BY: JUNMA 05.11.2017 SCALE
DESCRIPTION: HIGH POWER CIRCULATOR	CHK'D BY: APP'V'D BY: 1:3
Unit: mm[inch]	Tolerance: Liner: ±0.25 Anguar: ±0.5°
	The First:
	A4



This document is the property of DORADO Millimeter Wave. It cannot be copied, duplicated, used for manufacturing purposes or communicated to third party as a whole or partly, without the written consent of DORADO Millimeter Wave.