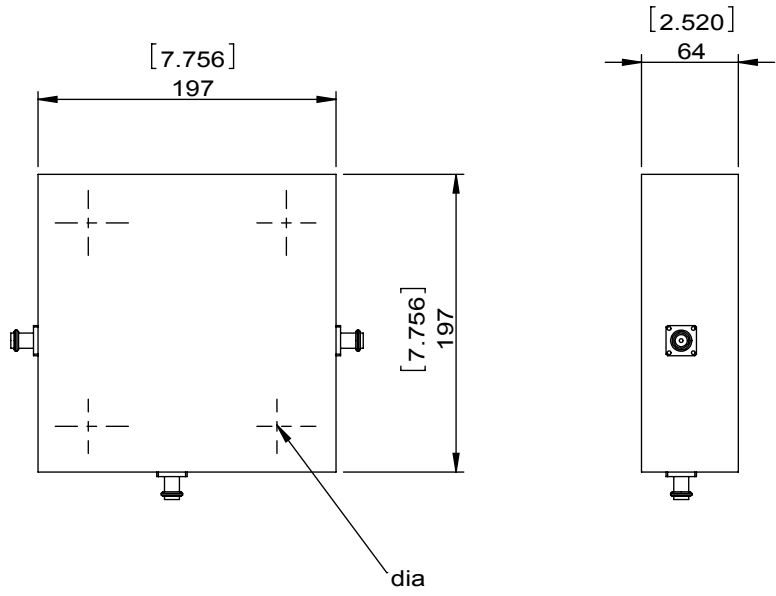


1		2		3		4		5		6	
Document No.	QR4-700-T-003	REV.	A/0	REV.	DESCRIPTION	REVISOR	DATE	APPROVED			
		0				JUNMA	05.11.2017	David			

SPECIFICATIONS	
Part's Number	1CCH99-1
Frequency(GHz)	0.088~0.108
Direction	CW
Insertion Loss(dB)MAX	0.35
Insertion Loss Ripple	
Isolation(dB)MIN	25
Return Loss(dB)MIN	23.13
3rd IMD(dBc)MAX	
Power FWD/REV/PK(Watt)	1500/1500/2000
Operating Temperature(°C)	+5~+45
Storage Temperature(°C)	
2nd/3rd Harmonic(dBc)	
Termination/Attenuator(Watt/dB)	1500
Tab(W×LG×THK)(mm[Inch])	
Additional Notes	GWB



		<b>DORADO Millimeter Wave</b>			
<b>MATERIAL:</b>		<b>DWG NO:</b> 1CCH99-1			
<b>SURFACE TREATMENT:</b>		DWG BY:	JUNMA	05.11.2017	SCALE
<b>DESCRIPTION:</b> <b>HIGH POWER CIRCULATOR</b>		CHK'D BY:			1:3
		APPV'D BY:			
		Unit: mm[inch]	Tolerance: Liner: ±0.25 Anguar: ±0.5°	The First:	



This document is the property of DORADO Millimeter Wave. It cannot be copied, duplicated, used for manufacturing purposes or communicated to third party as a whole or partly, without the written consent of DORADO Millimeter Wave.