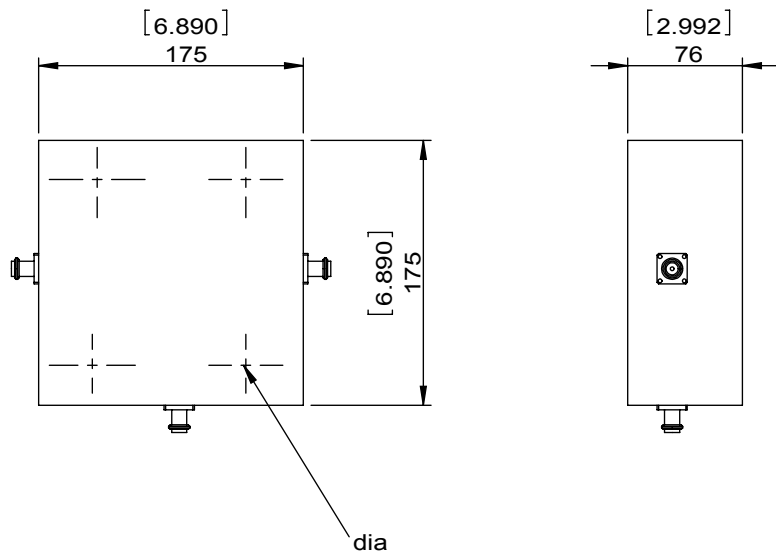


1		2		3		4		5		6	
Document No.	QR4-700-T-003	REV.	A/0	REV.	DESCRIPTION	REVISOR	DATE	APPROVED			
REV.	A/0	0		JUNMA	05.11.2017	David					

SPECIFICATIONS	
Part's Number	2CCH32-1
Frequency(GHz)	0.30~0.35
Direction	CW
Insertion Loss(dB)MAX	0.25
Insertion Loss Ripple	
Isolation(dB)MIN	23
Return Loss(dB)MIN	23.13
3rd IMD(dBc)MAX	
Power FWD/REV/PK(Watt)	1000/1000/75000
Operating Temperature(°C)	+10~+40
Storage Temperature(°C)	
2nd/3rd Harmonic(dBc)	
Termination/Attenuator(Watt/dB)	1000
Tab(W×LG×THK)(mm[Inch])	
Additional Notes	GWB



DORADO INTERNATIONAL **DORADO Millimeter Wave**

MATERIAL:	DWG NO: 2CCH32-1			
SURFACE TREATMENT:	DWG BY:	JUNMA	05.11.2017	SCALE
DESCRIPTION: HIGH POWER CIRCULATOR	CHK'D BY:			1:3
	APP'V'D BY:			A4
	Unit: mm[inch]	Tolerance: Liner: ±0.25 Anguar: ±0.5°	The First:	



This document is the property of DORADO Millimeter Wave. It cannot be copied, duplicated, used for manufacturing purposes or communicated to third party as a whole or partly, without the written consent of DORADO Millimeter Wave.