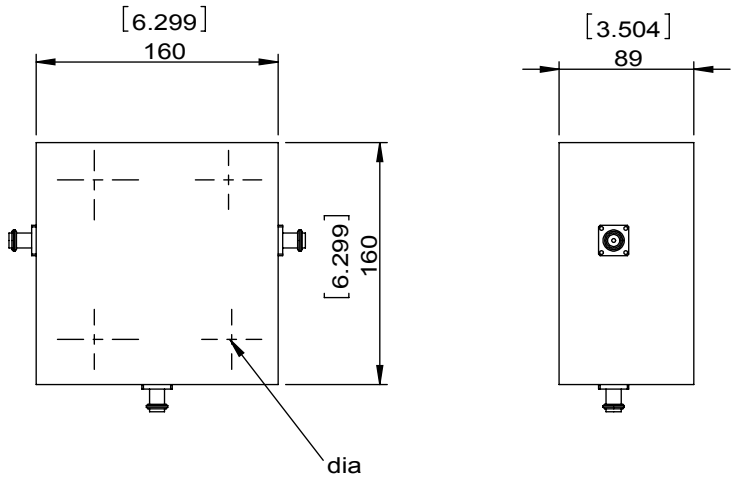


1		2		3		4		5		6	
Document No.	QR4-700-T-003					REV.	DESCRIPTION	REVISOR	DATE	APPROVED	
REV.	A/0					0		JUNMA	05.11.2017	David	

SPECIFICATIONS	
Part's Number	2CCH32-3
Frequency(GHz)	0.3215~0.3225
Direction	CW
Insertion Loss(dB)MAX	0.3
Insertion Loss Ripple	
Isolation(dB)MIN	23
Return Loss(dB)MIN	23.13
3rd IMD(dBc)MAX	
Power FWD/REV/PK(Watt)	2200/2200/2200
Operating Temperature(°C)	0~+40
Storage Temperature(°C)	
2nd/3rd Harmonic(dBc)	
Termination/Attenuator(Watt/dB)	2200
Tab(W×LG×THK)(mm[Inch])	
Additional Notes	GWB



DORADO Millimeter Wave				
<b>MATERIAL:</b>		<b>DWG NO:</b>		
		2CCH32-3		
<b>SURFACE TREATMENT:</b>		DWG BY:	JUNMA	05.11.2017
		CHK'D BY:		SCALE
<b>DESCRIPTION:</b>		APPV'D BY:		1:3
<b>HIGH POWER CIRCULATOR</b>		Unit:	Tolerance:	The First:
		mm[inch]	Liner: ±0.25	
			Anguar: ±0.5°	A4



This document is the property of DORADO Millimeter Wave. It cannot be copied, duplicated, used for manufacturing purposes or communicated to third party as a whole or partly, without the written consent of DORADO Millimeter Wave.