

1		2		3		4		5		6	
Document No.	QR4-700-T-003	REV.	A/0	REV.	DESCRIPTION	REVISOR	DATE	APPROVED			
		0				JUNMA	05.11.2017	David			

A

B

C

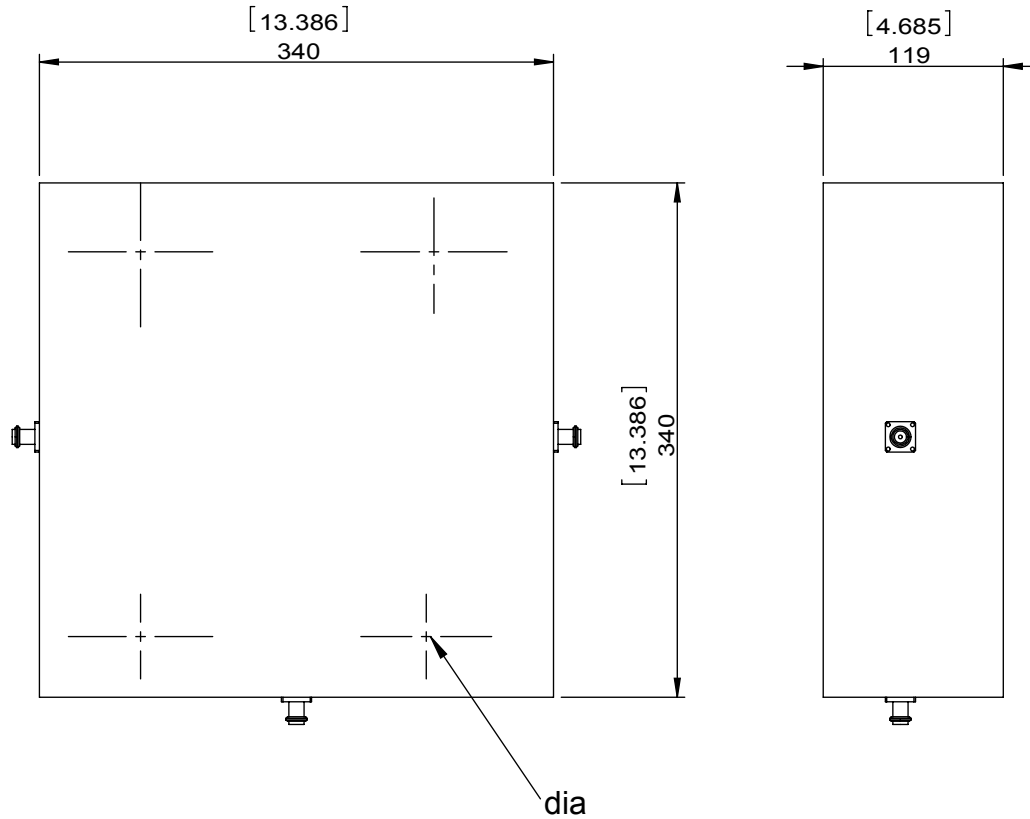
D

A

B

C

D



SPECIFICATIONS	
Part's Number	2CCH43-1
Frequency(GHz)	0.42~0.44
Direction	CW
Insertion Loss(dB)MAX	0.5
Insertion Loss Ripple	
Isolation(dB)MIN	20
Return Loss(dB)MIN	19.08
3rd IMD(dBc)MAX	
Power FWD/REV/PK(Watt)	8000/8000/500000
Operating Temperature(°C)	0~+50
Storage Temperature(°C)	
2nd/3rd Harmonic(dBc)	
Termination/Attenuator(Watt/dB)	8000
Tab(W×LG×THK)(mm[Inch])	
Additional Notes	GWB



DORADO Millimeter Wave

MATERIAL:

DWG NO:

2CCH43-1

SURFACE TREATMENT:

DWG BY:	JUNMA	05.11.2017	SCALE
CHK'D BY:			
APPV'D BY:			1:3

DESCRIPTION:

**HIGH POWER
CIRCULATOR**

Unit: mm[inch]	Tolerance: Liner: ±0.25 Anguar: ±0.5°	The First: 	A4
-------------------	---	----------------	----



This document is the property of DORADO Millimeter Wave. It cannot be copied, duplicated, used for manufacturing purposes or communicated to third party as a whole or partly, without the written consent of DORADO Millimeter Wave.

1

2

3

WEIGHT:

5

SHEET 1 OF 1