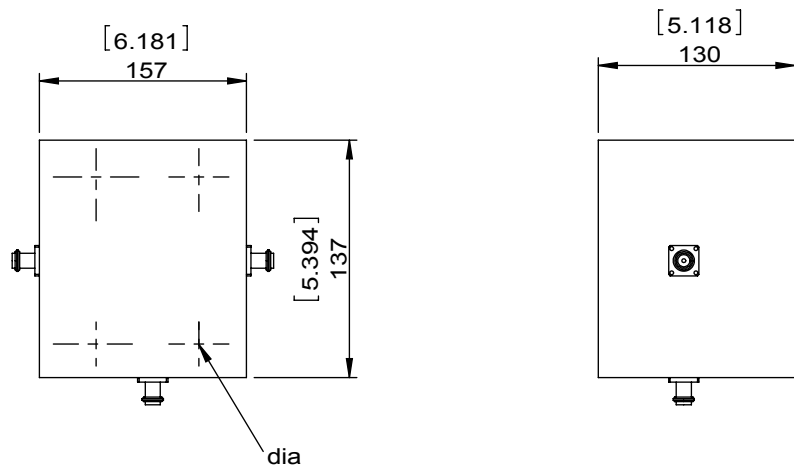


1		2		3		4		5		6	
Document No.	QR4-700-T-003					REV.	DESCRIPTION	REVISOR	DATE	APPROVED	
REV.	A/0					0		JUNMA	05.11.2017	David	



SPECIFICATIONS	
Part's Number	3CCH13-2
Frequency(GHz)	1.25~1.35
Direction	CW
Insertion Loss(dB)MAX	0.5
Insertion Loss Ripple	
Isolation(dB)MIN	20
Return Loss(dB)MIN	19.08
3rd IMD(dBc)MAX	
Power FWD/REV/PK(Watt)	2000/2000/200000
Operating Temperature(°C)	0~+50
Storage Temperature(°C)	
2nd/3rd Harmonic(dBc)	
Termination/Attenuator(Watt/dB)	2000
Tab(W×LG×THK)(mm[Inch])	
Additional Notes	GWB

DORADO Millimeter Wave	
MATERIAL:	DWG NO: 3CCH13-2
SURFACE TREATMENT:	DWG BY: JUNMA 05.11.2017 SCALE
DESCRIPTION: HIGH POWER CIRCULATOR	CHK'D BY: APPV'D BY: 1:3
	Unit: mm[inch] Tolerance: Liner: ±0.25 Anguar: ±0.5° The First:
	A4



This document is the property of DORADO Millimeter Wave. It cannot be copied, duplicated, used for manufacturing purposes or communicated to third party as a whole or partly, without the written consent of DORADO Millimeter Wave.