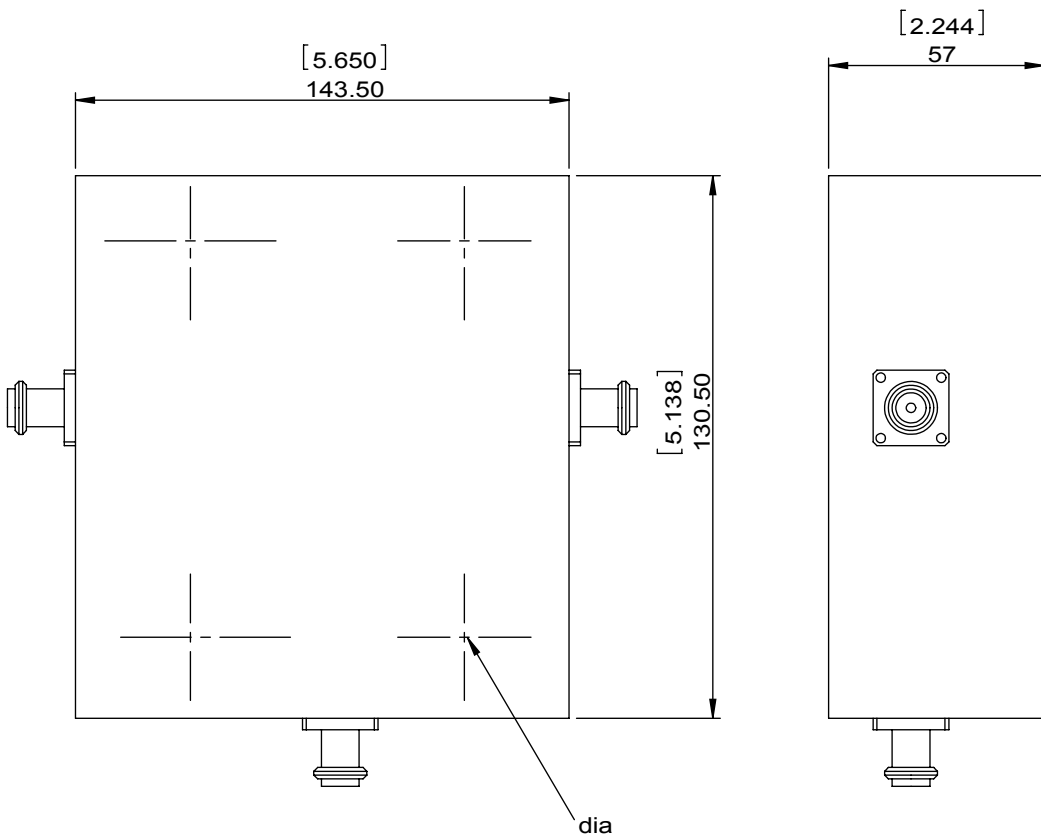


1		2		3		4		5		6	
Document No.	QR4-700-T-003	REV.	A/0	REV.	DESCRIPTION	REVISOR	DATE	APPROVED			
		0				JUNMA	05.11.2017	David			



SPECIFICATIONS	
Part's Number	3CCH15-3
Frequency(GHz)	1.0~2.0
Direction	CW
Insertion Loss(dB) TYP/MAX	0.6/1
Insertion Loss Ripple	
Isolation(dB) TYP/MIN	16/15
Return Loss(dB) TYP/MIN	15.56/14.72
3rd IMD(dBc)MAX	
Power FWD/REV/PK(Watt)	2500/2500/2500
Operating Temperature(°C)	25/-10~+55
Storage Temperature(°C)	
2nd/3rd Harmonic(dBc)	
Termination/Attenuator(Watt/dB)	2500
Tab(W×LG×THK)(mm[Inch])	
Additional Notes	GWB

DORADO Millimeter Wave				
MATERIAL:		DWG NO:		
		3CCH15-3		
SURFACE TREATMENT:		DWG BY:	JUNMA	05.11.2017
		CHK'D BY:		SCALE
DESCRIPTION:		APPV'D BY:		1:3
HIGH POWER CIRCULATOR		Unit:	Tolerance:	The First:
		mm[inch]	Liner: ±0.25	
			Anguar: ±0.5°	A4



This document is the property of DORADO Millimeter Wave. It cannot be copied, duplicated, used for manufacturing purposes or communicated to third party as a whole or partly, without the written consent of DORADO Millimeter Wave.