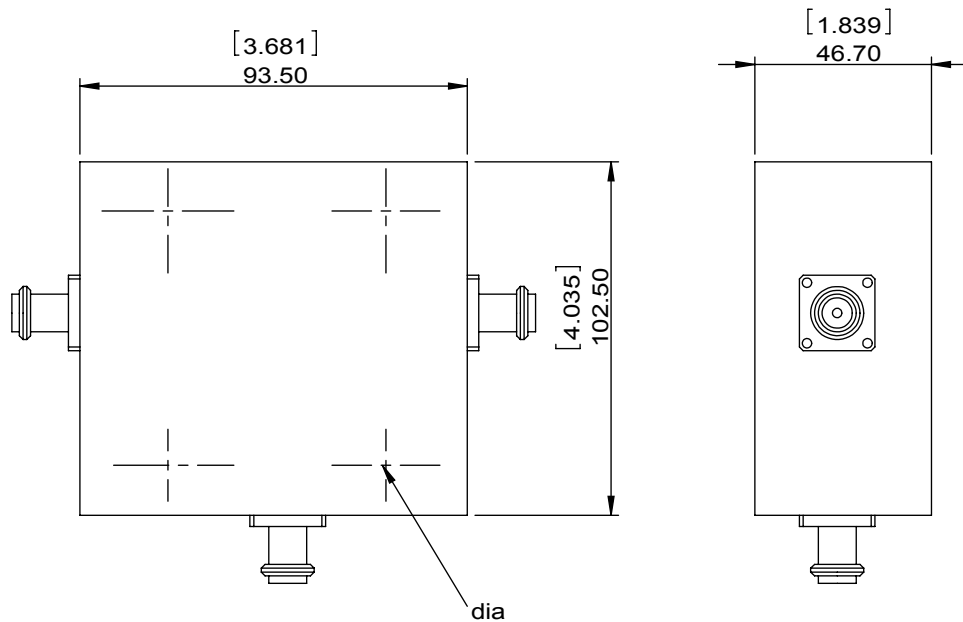


1		2		3		4		5		6	
Document No.	QR4-700-T-003	REV.	A/0	REV.	DESCRIPTION	REVISOR	DATE	APPROVED			
		0		JUNMA	05.11.2017	David					



SPECIFICATIONS	
Part's Number	3CCH30-1
Frequency(GHz)	2.0~.4.0
Direction	CW
Insertion Loss(dB) TYP/MAX	0.5/0.8
Insertion Loss Ripple	
Isolation(dB) TYP/MIN	18/15
Return Loss(dB) TYP/MIN	17.69/14.72
3rd IMD(dBc)MAX	
Power FWD/REV/PK(Watt)	1000/1000/1000
Operating Temperature(°C)	25/-10~+55
Storage Temperature(°C)	
2nd/3rd Harmonic(dBc)	
Termination/Attenuator(Watt/dB)	1000
Tab(W×LG×THK)(mm[Inch])	
Additional Notes	GWB

		DORADO Millimeter Wave			
MATERIAL:		DWG NO: 3CCH30-1			
SURFACE TREATMENT:		DWG BY:	JUNMA	05.11.2017	SCALE
DESCRIPTION: HIGH POWER CIRCULATOR		CHK'D BY:			1:3
		APPV'D BY:			
		Unit: mm[inch]	Tolerance: Liner: ±0.25 Anguar: ±0.5°	The First:	



This document is the property of DORADO Millimeter Wave. It cannot be copied, duplicated, used for manufacturing purposes or communicated to third party as a whole or partly, without the written consent of DORADO Millimeter Wave.