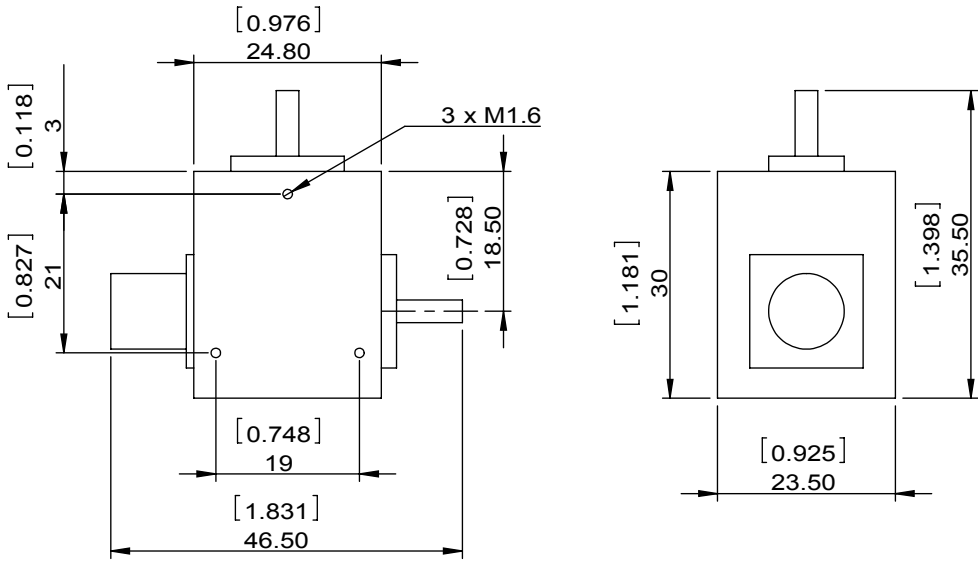


1		2		3		4		5		6	
Document No.		QR4-700-T-003		REV.		DESCRIPTION		REVISOR		DATE	
REV.		A/0		0				LH.Mao		03.22.2017	
								APPROVED		David	



SPECIFICATIONS	
Part's Number	3IDC24-1
Frequency(GHz)	2.15~2.55
Direction	CW
Insertion Loss(dB) TYP/MAX	0.4/0.7
Insertion Loss Ripple	
Isolation(dB) TYP/MIN	19/16
Return Loss(dB) TYP/MIN	17.69/15.56
3rd IMD(dBc)MAX	
Power FWD/REV/PK(Watt)	1/-/-
Operating Temperature(°C)	-196/+15 to +35
Storage Temperature(°C)	
2nd/3rd Harmonic(dBc)	
Termination/Attenuator(Watt/dB)	
Tab(W×LG×THK)(mm[Inch])	
Additional Notes	GWB

DORADO Millimeter Wave				
MATERIAL:		DWG NO: 3IDC24-1		
SURFACE TREATMENT:		DWG BY:	LH.Mao	03.22.2017
DESCRIPTION: Cryogenic Isolator		CHK'D BY:		SCALE
		APP'V'D BY:		1:1
		Unit: mm[inch]	Tolerance: Liner: ±0.25 Anguar: ±0.5°	The First:
				A4



This document is the property of DORADO Millimeter Wave. It cannot be copied, duplicated, used for manufacturing purposes or communicated to third party as a whole or partly, without the written consent of DORADO Millimeter Wave.