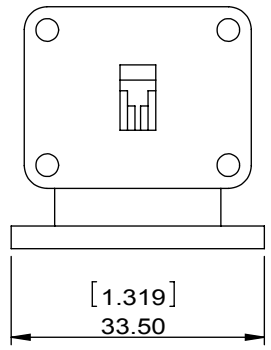
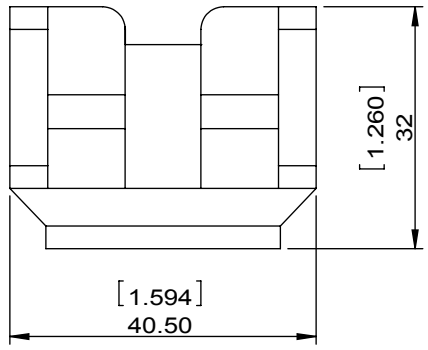


1		2		3		4		5		6	
Document No.	QR4-700-T-003	REV.	A/0	REV.	DESCRIPTION	REVISOR	DATE	APPROVED			
		0				LH.Mao	03.24.2017	David			



SPECIFICATIONS	
Part's Number	4CWC15-2
Frequency(GHz)	12.4~18.0
Direction	CW
Insertion Loss(dB)MAX	0.3
Insertion Loss Ripple	
Isolation(dB)MIN	20
Return Loss(dB)MIN	20.08
3rd IMD(dBc)MAX	
Power FWD/REV/PK(Watt)	
Operating Temperature(°C)	4~77K
Storage Temperature(°C)	
2nd/3rd Harmonic(dBc)	
Termination/Attenuator(Watt/dB)	-
Tab(W×LG×THK)(mm[Inch])	
Additional Notes	GWB

DORADO INTERNATIONAL

MATERIAL:

DWG NO: 4CWC15-2

SURFACE TREATMENT:

DESCRIPTION: Waveguide Circulator

DWG BY:	LH.Mao	03.24.2017	SCALE
CHK'D BY:			
APPV'D BY:			1:1
Unit: mm[inch]	Tolerance: Liner: ±0.25 Anguar: ±0.5°	The First:	A4



This document is the property of DORADO Millimeter Wave. It cannot be copied, duplicated, used for manufacturing purposes without the written consent of DORADO Millimeter Wave.