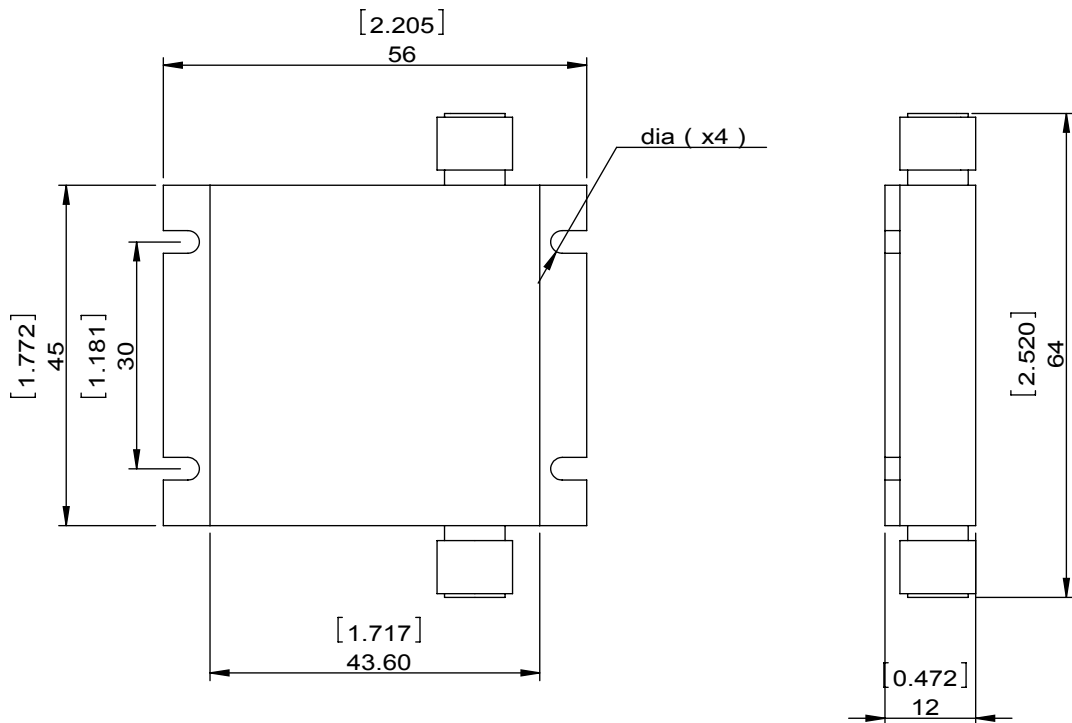


1		2		3		4		5		6	
Document No.	QR4-700-T-003	REV.	A/0	REV.	DESCRIPTION	REVISOR	DATE	APPROVED			
		0				LH.Mao	02.24.2017	David			



SPECIFICATIONS	
Part's Number	4ICP10-1P
Frequency(GHz)	2.0~18.0
Direction	CW
Insertion Loss(dB) TYP/MAX	3.5/3.5/4.0
Insertion Loss Ripple	
Isolation(dB) TYP/MIN	14/10.5/10
Return Loss(dB) TYP/MIN	11.12/10.88
3rd IMD(dBc)MAX	
Power FWD/REV/PK(Watt)	10/4/-
Operating Temperature(°C)	25/-10 to +60
Storage Temperature(°C)	
2nd/3rd Harmonic(dBc)	
Termination/Attenuator(Watt/dB)	
Tab(W×LG×THK)(mm[Inch])	
Additional Notes	GWB

<b>DORADO Millimeter Wave</b>				
<b>MATERIAL:</b>		<b>DWG NO:</b>		
		4ICP10-1P		
<b>SURFACE TREATMENT:</b>		DWG BY:	LH.Mao	02.24.2017
		CHK'D BY:		SCALE
<b>DESCRIPTION:</b>		APPV'D BY:		1:1
<b>BROADBAND ISOLATOR</b>		Unit:	Tolerance:	The First:
		mm[inch]	Liner: ±0.25	
			Anguar: ±0.5°	A4



This document is the property of DORADO Millimeter Corp. It cannot be copied, duplicated, used for manufacturing purposes or communicated to third party as a whole or partly, without the written consent of DORADO Millimeter Corp.